

15 series is the safe and reliable approach to level application in hazardous location. It is designed according to the explosion protection regulation. (GB3836.1-2000, Electrical Apparatus for Explosive Gas Atmospheres Part1:General Requirements; GB3836.2-2000, Electrical Apparatus for Explosive Gas Atmospheres Part2: Flameproof enclosure "d")

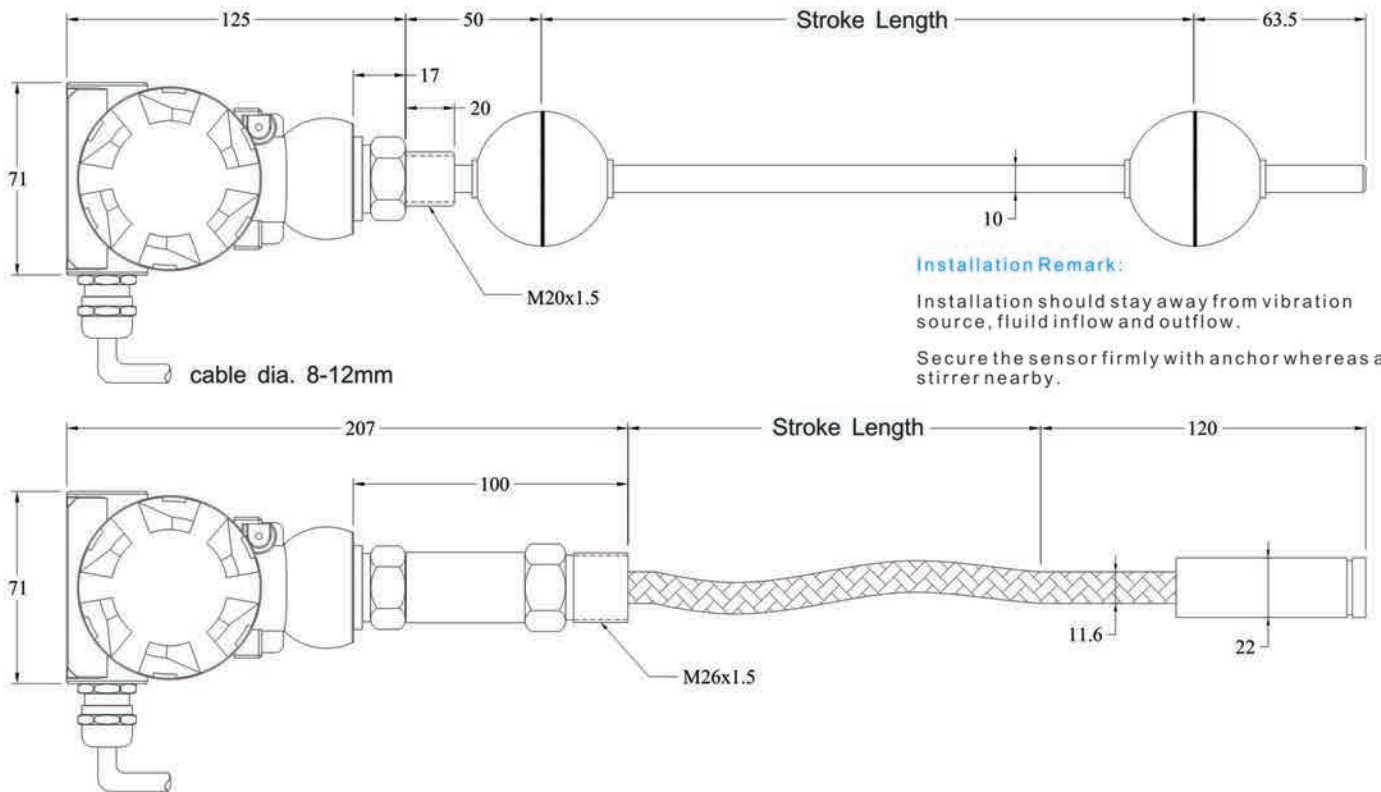
It adopts the non-contact magnet-rostrictive to provide feedback of fluid level and multi-interface level of a storage tank or process vessel. The non-contact feature provides exceptional ease of installation and guarantees almost unlimited mechanical life expectancy. The high versatile IP67 profile housing offers full protection against outside agents for use in harsh environments with high contamination and presence of dust.



Specifications

Order Code	150	151 / 152
Output	Voltage(0-10V)	Current (0-20mA, 4-20mA)
Measurement Type	Linear displacement	
Resolution	16 Bit D/A, 0.0015% (minimum 1µm)	
Repeatability	< ±0.001% of full scale (minimum ±2.5µm)	
Non-Linearity	< ±0.01% of full scale (minimum ±40µm)	
Update Time	0.5 ms up to 1200 mm / 1.0 ms up to 2400 mm 2.0 ms up to 4800 mm / 5.0 ms up to 7600 mm	
Input Voltage	+24Vdc (20.4 - 28.8Vdc)	
Input Protection	Polarity protection up to -30Vdc, Over voltage protection up to 36Vdc	
Power Consumption	100mA (stroke range dependent)	
Dielectric Strength	500Vdc (DC ground to machine ground)	
Connector Type	Internal wire terminal	
Pressure Rating	100 bar	
Operation Temp.	-40 to 75°C, Humidity 90% non-condensing	
Sealing	IP 67	
Vibration Rating	15g / 10-2000Hz / IEC standard 68-2-6	
Shock Rating	100g single hit per IEC standard 68-2-27	
EMC	Emission EN 68000-6-3, Immunity EN 61000-6-2, EN 61000-4-2/3/4/6	
Explosion Rating	Explosion protection only apply to stainless steel rod type GB3836.1-2000, Electrical Apparatus for Explosive Gas Atmospheres Part1:General Requirements; GB3836.2-2000, Electrical Apparatus for Explosive Gas Atmospheres Part2: Flameproof enclosure "d"	

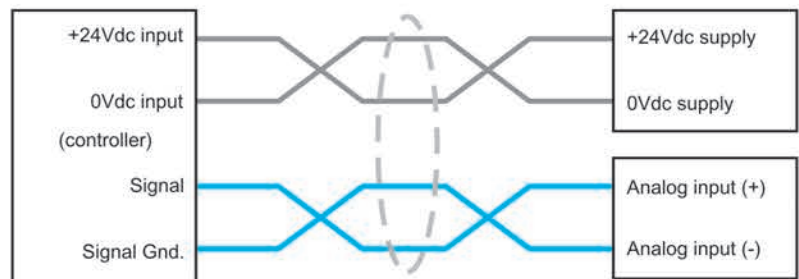
Installation



Wiring Connection



1	+24 Vdc
2	0 Vdc
3	Signal
4	Signal Gnd



Order Code

1 5 X X X X X X X X

Output

- 0 = 0 - 10V
- 1 = 4 - 20mA
- 2 = 20 - 4mA

Local Display

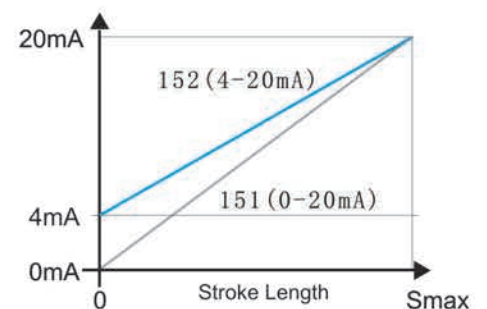
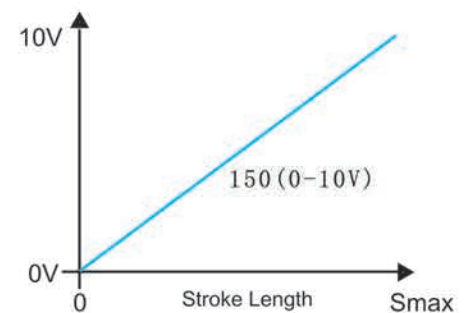
- 0 = None
- 1 = Local Display

Type

- H = Hydraulic Rod
- F = Flexible Stainless Steel Tube with Teflon Inlay

Stroke Length (mm)

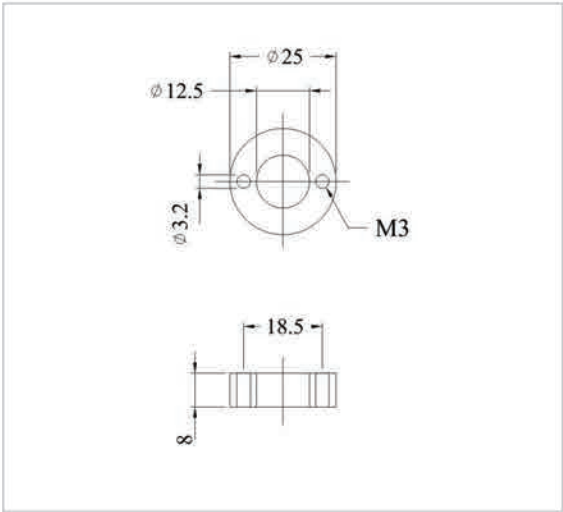
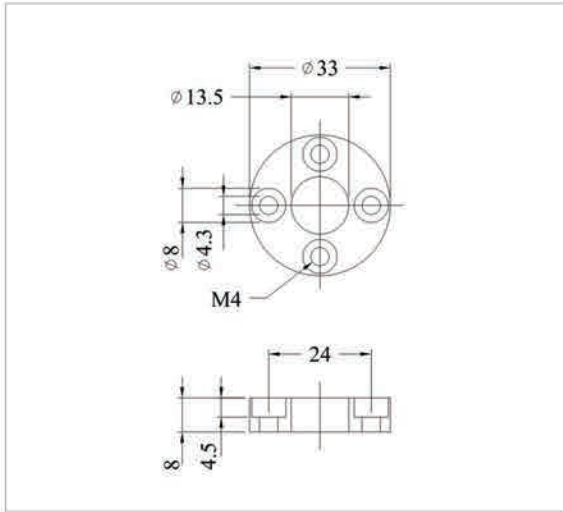
00500, 00525, 00550, 00575, 00600,
00625, 00650, 00675, 00700, 00725,
00750, 00775, 00800, (25mm increment after)



Discription
For series
Order Code

Dia. 33mm ring
12/17/19 Series
1700 951 001

Dia. 25mm ring
12/17/19 Series
1700 951 003



Material
Weight

Plastic
~8g

Plastic
~8g

Discription
Order Code
Material

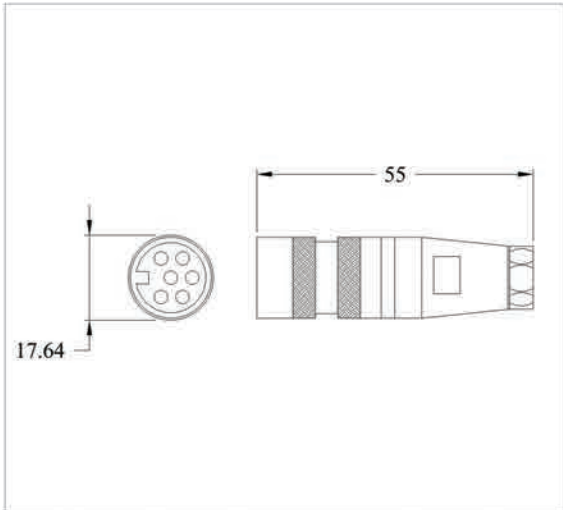
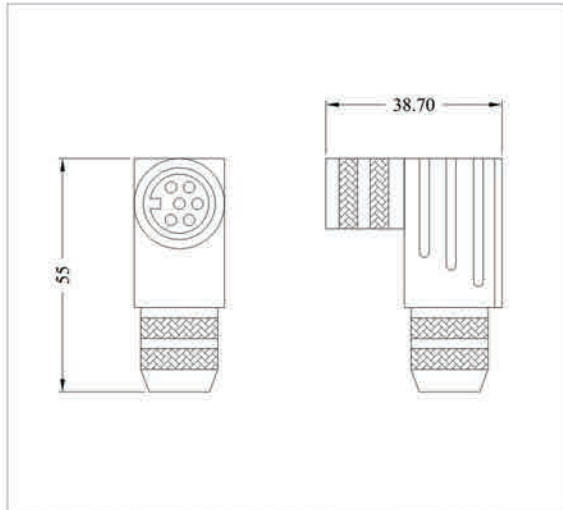
Dia. 33mm Spacer
1700 951 002
Plastic

Dia. 25mm Spacer
1700 951 004
Plastic

Discription
Model

90Deg. 6/7pin. Connector (female)	
D60	D70

6/7pin. Connector (female)	
D60	D70



Order Code
Material
Weight

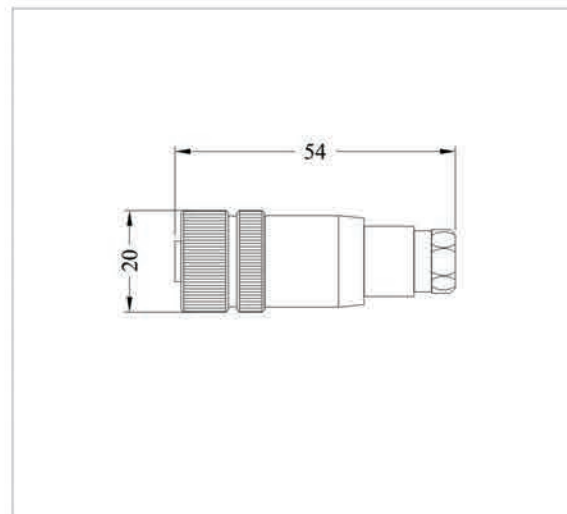
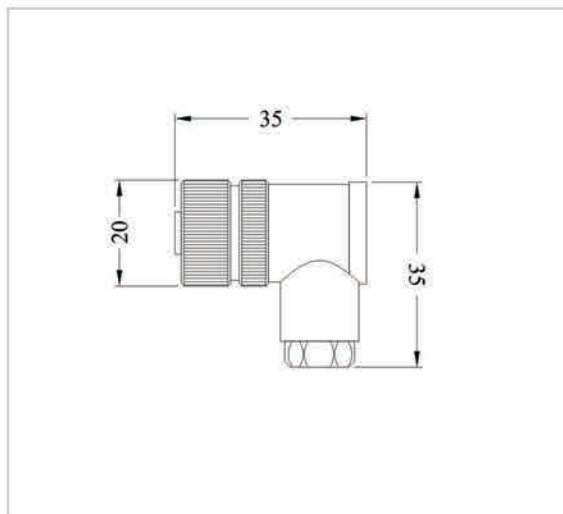
1800 951 011	1800 951 013
Housing: Zinc nickel platedI	
~60g	

1800 951 010	1800 951 012
Housing: Zinc nickel platedI	
~40g	

Discription
Order Code

M12 90Deg 5pins Connector (Female)
1800 951 018

M12 5pins Connector (Female)
1800 951 017



Material
Cable Diameter

Cu Zn / Plastic
6 - 8 m m

Cu Zn / Plastic
6 - 8 m m



Discription	Floating Ball	Floating Ball	Floating Ball	Floating Ball
Order Code	1700 951 005	1700 951 006	1700 951 007	1700 951 008
Material	304 SS	304 SS	304 SS	304 SS
Inside Dia. (ID)	15 mm	23 mm	23 mm	9 mm
Out Dia./Height	52 x 52 mm	75 x 70 mm	125 x 120 mm	28 x 28 mm
Density	0.7	0.7	0.7	0.7
Pressure Rating	40 bar	40 bar	40 bar	40 bar



Discription	Floating Marker	Floating Marker	Floating Marker	Floating Marker
Order Code	1700 951 009	1700 951 010	1700 951 011	1700 951 012
Material	PP Plastic	PP Plastic	PP Plastic	PP Plastic
Inside Dia. (ID)	8 mm	8 mm	9 mm	9 mm
Out Dia./Height	18 x 8 mm	19 x 17 mm	24 x 10 mm	26 x 17 mm
Density	0.7	0.7	0.7	0.7

* use for special 7mm Stainless Steel tube



Discription	Floating Ball Stopper	Floating Ball Stopper
Order Code	1700 951 013	1700 951 014
Material	304 SS	304 SS
Inside Dia. (ID)	10 mm	7 mm
Out Dia./Height	20 x 13 mm	16 x 13 mm



3 Twisted Pairs Cable Order Code

1 8 0 0 9 5 1 1 X X

Cable Length

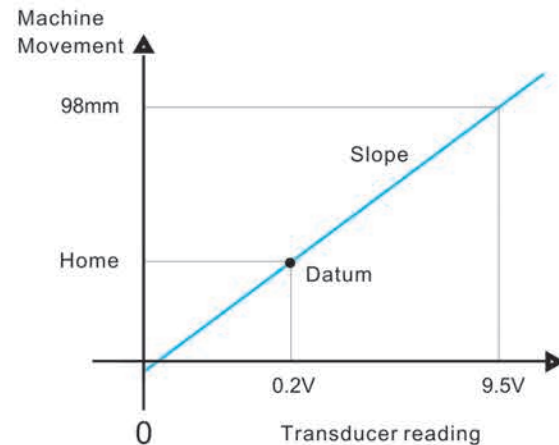
Please select the cable length in unit Meter
For example, 01 = 1 Meter
(Cable price not include connector)
If purchase the connector together, we can install
the connector with cable for free of charge.

Color Code	D60	D70	4 Pins Voltage	4 Pins Current
Black	1	1	P3	N.C
White	2	2	P3 Gnd.	N.C
Yellow	3	3	P2	P2
Green	4	4	P2 Gnd.	P2 Gnd.
Red	5	5	P1	P1
Blue	6	6	P4	P4
		7 (N.C)		

Transducer on machine calibration

To make sure the nominal stroke length is fully covered, all analog position transducers' output signal were calibrated slightly wider than the stroke. After installation, the machine needs to go through calibration. The step is as follow.

- 1) Move the machine to home position and record the transducer reading.
Example: at home, the transducer reading = 0.2V
- 2) Move the machine away from home position, measure the actual movement and record the transducer reading.
Example: actual movement = 98mm,
transducer actual movement reading = 9.5V
- 3) Calculate the "slope"
Slope = actual movement / (transducer actual movement reading - transducer home reading).
Example: slope = 98mm / (9.5V - 0.2V) = 10.537
- 4) Calculate the "datum"
Datum = slope x transducer home reading
Example: datum = 10.537 x 0.2V = 2.106
- 5) Machine position = (slope x transducer reading) - datum
Example: machine position = (10.537 x transducer reading) - 2.106



International Protection Rating (IP)

IP X X

Solid particle protection

- 4 = >1mm object size protected against
- 5 = Ingress of dust is not entirely prevented, but it must not enter in sufficient quantity to interfere with the satisfactory operation of the equipment;
- 6 = No ingress of dust; complete protection against contact

Liquid ingress protection

- 0 = Not protected
- 5 = Water projected by a nozzle (6.3mm) against enclosure from any direction shall have no harmful effects.
- 7 = Ingress of water in harmful quantity shall not be possible when the enclosure is immersed in water under defined conditions of pressure and time (up to 1 m of submersion).



Transducer may in touch with dust and water, having proper IP rating is needed. Potentiometer IP rating is IP 40 or 50 but non-contact position transducer IP rating is IP 65 or even 67.

Installation of floating magnet



Installation of floating magnet is very simple. Compared to captive magnet, floating magnet can truly demonstrate the advantage of non-contact sensing and eliminate the wear of captive magnet socket.

www.germanjet.de

