

SSB SEALED BEAM LOAD CELL (U.S. & METRIC)

FEATURES & BENEFITS

- Proprietary Interface temperature compensated strain gages
- Environmentally sealed
- 0.01% non-repeatability
- 0.0008%/°F temp. effect on output
- Tension and compression
- Compact size

SPECIFICATIONS

CAPACITY		50 - 5K lbf (222 - 22.2K N)	10K lbf (44.5K N)	
ACCURACY – (MAX ERROR)				
Nonlinearity – %FS		±0.03		
Hysteresis – %FS		±0.02	±0.03	
Non-repeatability – %RO		± 0.01		
Creep, in 20 min – %		± 0.025		
TEMPERATURE				
Compensated Range	°F	0 to +150		
	°C	-15 to +65		
Operating Range	°F	-65 to +200		
	°C	-55 to +90		
Effect on Output – % / °F MAX		±0.008		
Effect on Zero – %RO / °F MAX		±0.15		
ELECTRICAL				
Rated Output – mV/V (Nominal)		3.0		
Zero Balance – %RO		±1.0		
Bridge Resistance – Ohm (Nominal)		350		
Excitation Voltage – VDC MAX		15		
Insulation Resistance – Megohm		5000		
MECHANICAL				
Calibration		Compression		
Safe Overload – %CAP		±150		
NATURAL FREQUENCY/DEFLECTION				
lbf	N	Deflection		Nat. Freq. (Hz)
		in	mm	
50	222	0.004	0.1016	2130
100	445	0.004	0.1016	2400
250	1.11K	0.005	0.127	3000
500	2.22K	0.010	0.254	2220
1K	4.45K	0.013	0.3302	1970
2.5K	11.1K	0.025	0.635	1720
5K	22.2K	0.022	0.5588	1400
10K	44.5K	0.026	0.6604	1620
Material	50 - 2.5K lbf	Aluminum		
	222 - 11.1K N			
	5K - 10K lbf	Alloy Steel		
	22.2K - 44.5K N			

STANDARD CONFIGURATION



Model SSB (shown)

OPTIONS

- Standardized output
- Cable length
- Transducer Electronic Data Sheet (TEDS)
- Special temperature range
- Custom calibration
- Add connector to cable

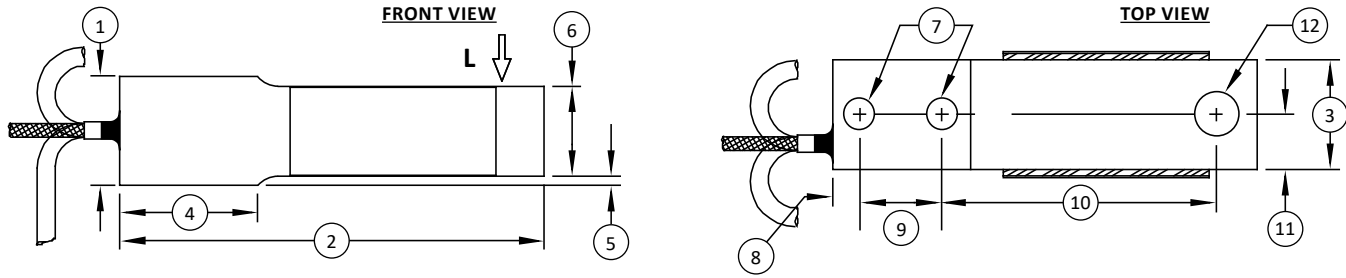
ACCESSORIES

- Instrumentation

CONNECTOR OPTIONS

- 10 ft (3 m) integral cable

SSB SEALED BEAM LOAD CELL (U.S. & METRIC)

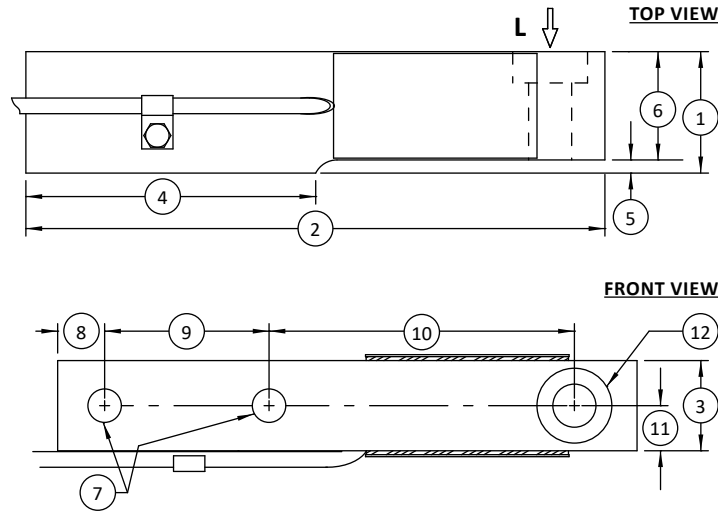


Notes:
* L indicates load direction

DIMENSIONS

See Drawing	CAPACITY									
	U.S. (lbf)	Metric (N)	U.S. (lbf)	Metric (N)	U.S. (lbf)	Metric (N)	U.S. (lbf)	Metric (N)	U.S. (lbf)	Metric (N)
	in	mm	in	mm	in	mm	in	mm	in	mm
(1)	0.98	24.9	0.98	24.9	0.98	24.9	1.00	25.4	1.50	38.1
(2)	2.38	60.5	2.38	60.5	2.38	60.5	3.88	98.6	5.00	127
(3)	0.50	12.7	0.50	12.7	0.50	12.7	1.00	25.4	1.00	25.4
(4)	0.97	24.6	0.97	24.6	0.97	24.6	1.25	31.8	1.75	44.5
(5)	0.11	2.8	0.15	3.9	0.11	2.8	0.09	2.3	0.10	2.5
(6)	0.82	20.8	0.73	18.4	0.82	20.8	0.82	20.8	1.36	34.5
(7)	Ø0.17	Ø4.3	Ø0.17	Ø4.3	Ø0.17	Ø4.3	Ø0.28	Ø7.1	Ø0.41	Ø10.3
(8)	0.25	6.4	0.25	6.4	0.25	6.4	0.25	6.4	0.38	9.7
(9)	0.50	12.7	0.50	12.7	0.50	12.7	0.75	19.1	1.00	25.4
(10)	1.31	33.3	1.31	33.3	1.31	33.3	2.50	63.5	3.25	82.6
(11)	0.25	6.4	0.25	6.4	0.25	6.4	0.50	12.7	0.50	12.7
(12)	Ø0.17	Ø4.3	Ø0.17	Ø4.3	Ø0.17	Ø4.3	Ø0.40	Ø10.2	Ø0.40	Ø10.2

SSB SEALED BEAM LOAD CELL (U.S. & METRIC)



Notes:
* L indicates load direction

DIMENSIONS (CONTINUED)

See Drawing	CAPACITY			
	U.S. (lbf)	Metric (N)	U.S. (lbf)	Metric (N)
	2.5K - 5K	11.1K - 22.2K	10K	44.5K
	in	mm	in	mm
(1)	1.45	36.8	1.94	49.3
(2)	8.00	203.0	9.25	235.0
(3)	1.44	36.6	1.44	36.6
(4)	3.75	95.0	4.63	117.0
(5)	0.10	2.5	0.21	5.3
(6)	1.35	34.3	1.73	44
(7)	Ø0.53	Ø13.0	Ø0.53	Ø13.5
(8)	0.75	19.0	0.75	19.0
(9)	2.50	63.5	2.63	66.8
(10)	3.88	98.6	4.88	124.0
(11)	0.72	18.3	0.72	18.3
(12)	Ø0.69	Ø17.5	Ø0.69	Ø17.5